

FOOD SERVICE TECHNOLOGY CENTER

PROMOTING ENERGY EFFICIENCY IN FOODSERVICE

1.800.398.3782 12949 Alcosta Blvd Suite 101 San Ramon CA 94583

Pre Rinse Spray Nozzle Test Summary Report **FSTC Report #: 5012.09.22** **Date: 07.02.09**

| Specifications | |
|--------------------------------|----------------------|
| Make | T&S Brass |
| Model | B-0107-C & EB-0107-C |
| Rated Flow Rate @ 60 psi (gpm) | 0.65 |

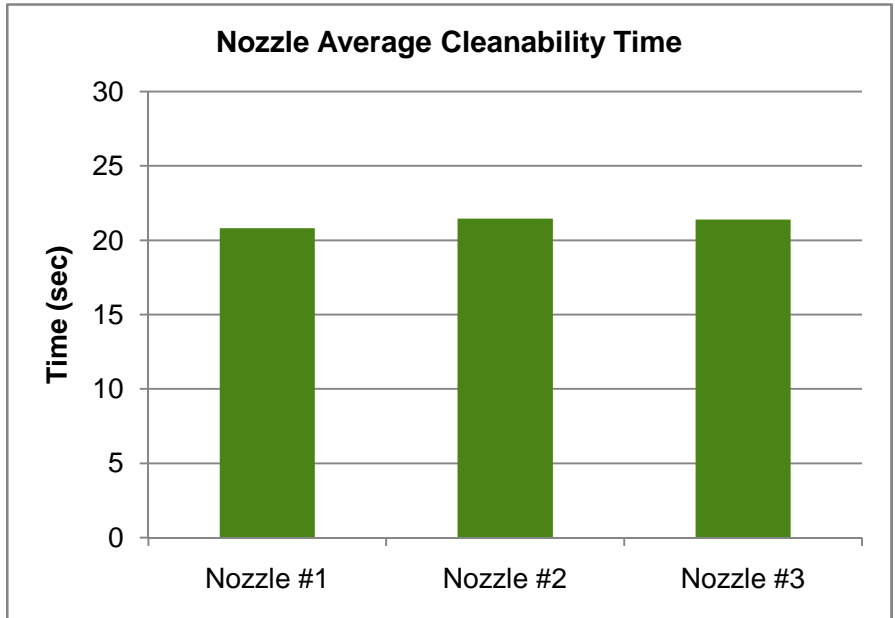
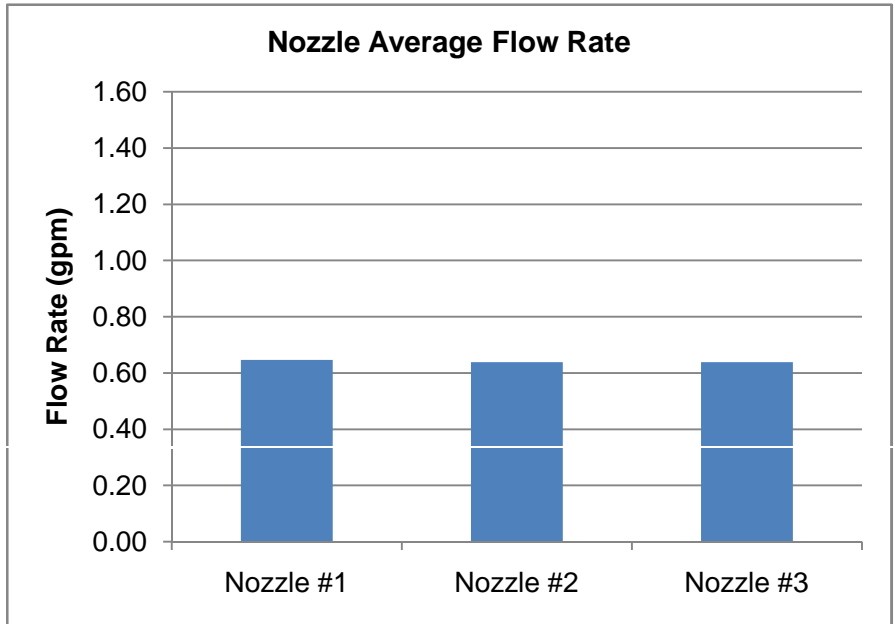
| Test Parameters | |
|-------------------|------------|
| Water Pressure | 60 ± 2 psi |
| Water Temperature | 120 ± 4°F |

| Nozzle #1 - Solid Position | | |
|----------------------------|-----------------|------------------------|
| Test | Flow Rate (gpm) | Cleanability (seconds) |
| 1 | 0.65 | 21 |
| 2 | 0.65 | 21 |
| 3 | 0.64 | 21 |
| Average | 0.65 | 21 |

| Nozzle #2 - Solid Position | | |
|----------------------------|-----------------|------------------------|
| Test | Flow Rate (gpm) | Cleanability (seconds) |
| 1 | 0.64 | 21 |
| 2 | 0.64 | 22 |
| 3 | 0.64 | 22 |
| Average | 0.64 | 21 |

| Nozzle #3 - Solid Position | | |
|----------------------------|-----------------|------------------------|
| Test | Flow Rate (gpm) | Cleanability (seconds) |
| 1 | 0.64 | 21 |
| 2 | 0.64 | 21 |
| 3 | 0.64 | 21 |
| Average | 0.64 | 21 |

| Average Results | | |
|-----------------|------------------|------------------------|
| | Water Flow (gpm) | Cleanability (seconds) |
| Nozzle #1 | 0.65 | 21 |
| Nozzle #2 | 0.64 | 21 |
| Nozzle #3 | 0.64 | 21 |
| Average | 0.64 | 21 |



- Tested in accordance with ASTM F2324 - 03 (Standard Test Method for Prerinse Spray Valves)
- Tested nozzles are in compliance with the minimum performance provisions shown in section 1605.3(h) of CA Title 20 Appliance Efficiency Regulation
- Tested nozzles are in compliance with the appropriate marking requirements shown in section 1607 of CA Title 20 Appliance Efficiency Regulation

- The Food Service Technology Center program is funded by the California utility customer and administered by the Pacific Gas & Electric Company under the auspices of the California Public Utilities Commission



T&S BRASS AND BRONZE WORKS, INC.

2 Saddleback Cove / P.O. Box 1088
Travelers Rest, SC 29690



REG. #A2601
ISO #9001

Model No.

B-0107-C

Item No.

Travelers Rest, SC: 800-476-4103 Simi Valley, CA: 800-423-0150 Fax: 864-834-3518 www.tsbrass.com

This Space for Architect/Engineer Approval

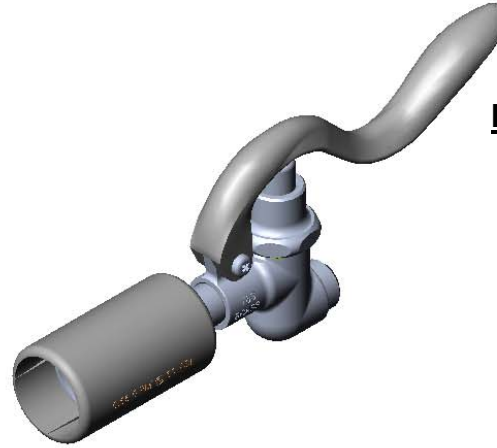
Job Name _____ Date _____

Model Specified _____ Quantity _____

Customer/Wholesaler _____

Contractor _____

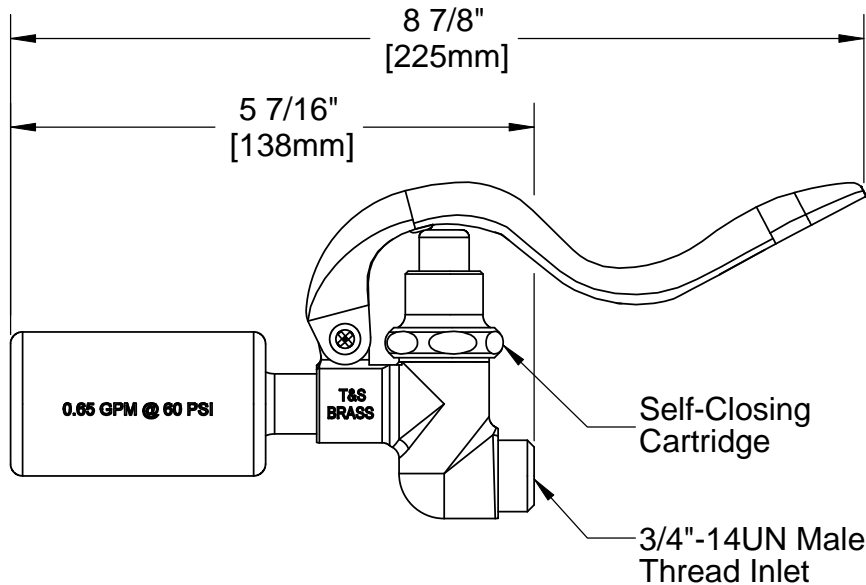
Architect/Engineer _____



EPAct 2005 Compliant



Furnished w/ Hose Washer & Hold Down Ring



Product Specifications:

Self-Closing Pre-Rinse Spray Valve w/ 0.65 GPM Spray Nozzle

Drawn
JRM

Checked
DMH

Approved
JHB

Scale:

1 : 2

Date:

9/01/09



T&S BRASS AND BRONZE WORKS, INC.

2 Saddleback Cove / P.O. Box 1088
Travelers Rest, SC 29690



REG. #A2601
ISO #9001

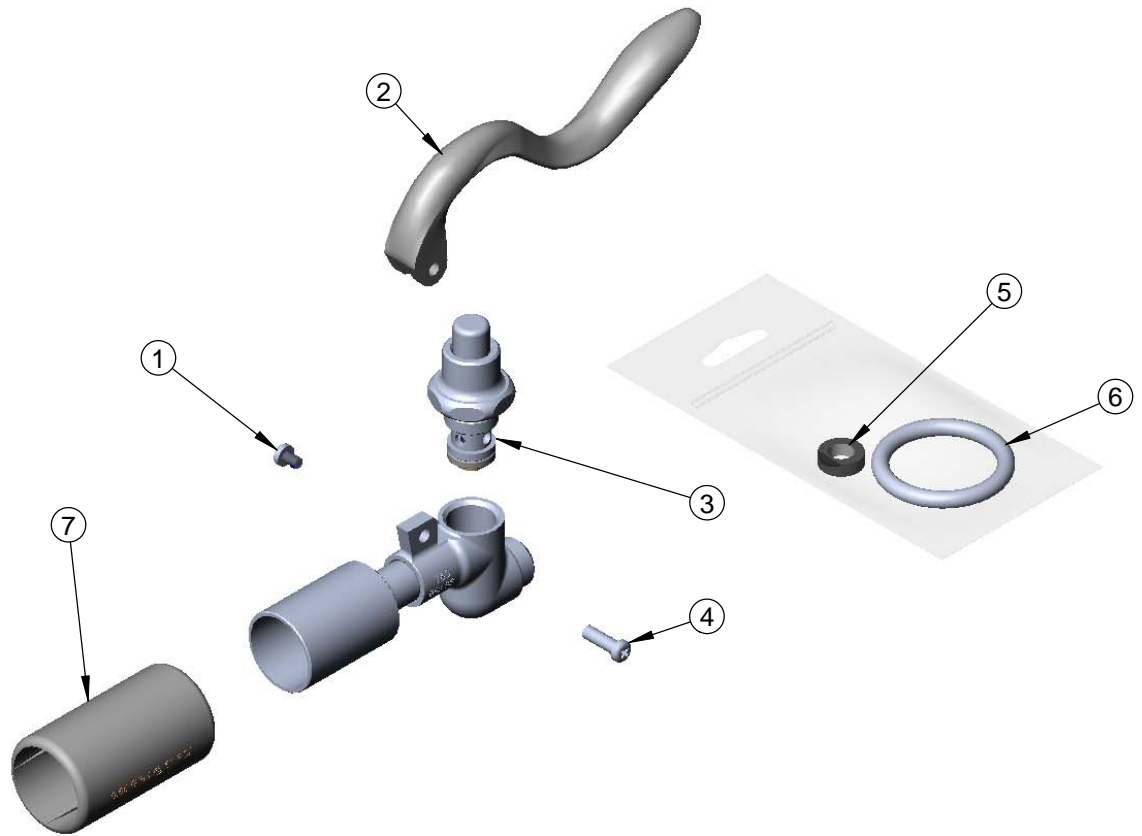
Model No.

B-0107-C

Item No.

Travelers Rest, SC: 800-476-4103 Simi Valley, CA: 800-423-0150 Fax: 864-834-3518 www.tsbrass.com

| ITEM NO. | SALES NO. | DESCRIPTION |
|----------|-----------|-----------------------------|
| 1 | 003199-45 | Handle Screw, Spray Valve |
| 2 | 001120-45 | Spray Valve Handle |
| 3 | 002856-40 | Bonnet Asm, Spray Valve |
| 4 | 003198-45 | Handle Nut, Spray Valve |
| 5 | 010476-45 | #27 Washer |
| 6 | 000907-45 | Ring, Spray Valve Hold Down |
| 7 | 017709-45 | Shield, Low Flow 0.65 GPM |



Product Specifications:

Self-Closing Pre-Rinse Spray Valve w/ 0.65 GPM Spray Nozzle

Drawn
JRM

Checked
DMH

Approved
JHB

Scale:
NTS

Date:
9/01/09



T&S BRASS AND BRONZE WORKS, INC.

2 Saddleback Cove / P.O. Box 1088
Travelers Rest, SC 29690



REG. #A2601
ISO #9001

Model No.

EB-0107-C

Item No.

Travelers Rest, SC: 800-476-4103 Simi Valley, CA: 800-423-0150 Fax: 864-834-3518 www.tsbrass.com

This Space for Architect/Engineer Approval

Job Name _____ Date _____

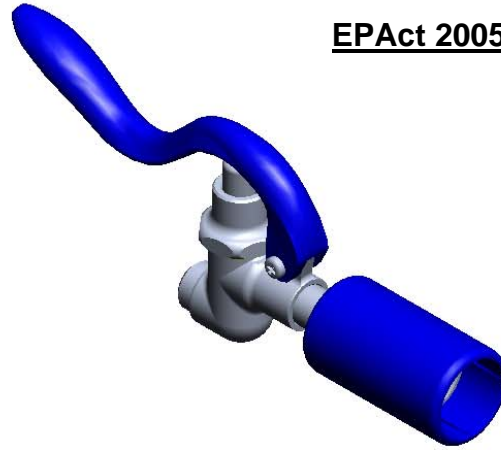
Model Specified _____ Quantity _____

Customer/Wholesaler _____

Contractor _____

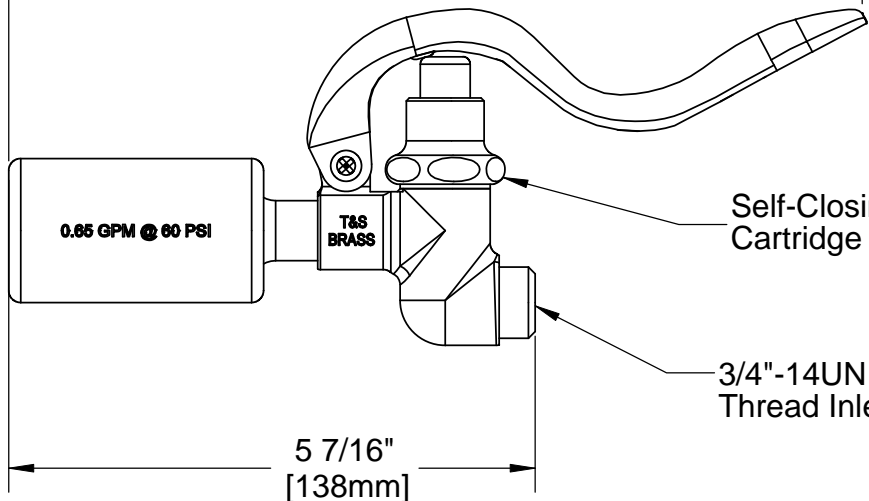
Architect/Engineer _____

EPAct 2005 Compliant



Furnished w/ Hose Washer & Hold Down Ring

8 7/8"
[226mm]



Product Specifications:

Self-Closing Pre-Rinse Spray Valve w/ 0.65 GPM Spray Nozzle

Drawn
JRM

Checked
DMH

Approved
JHB

Scale:

1 : 2

Date:

9/01/09



T&S BRASS AND BRONZE WORKS, INC.

2 Saddleback Cove / P.O. Box 1088
Travelers Rest, SC 29690



REG. #A2601
ISO #9001

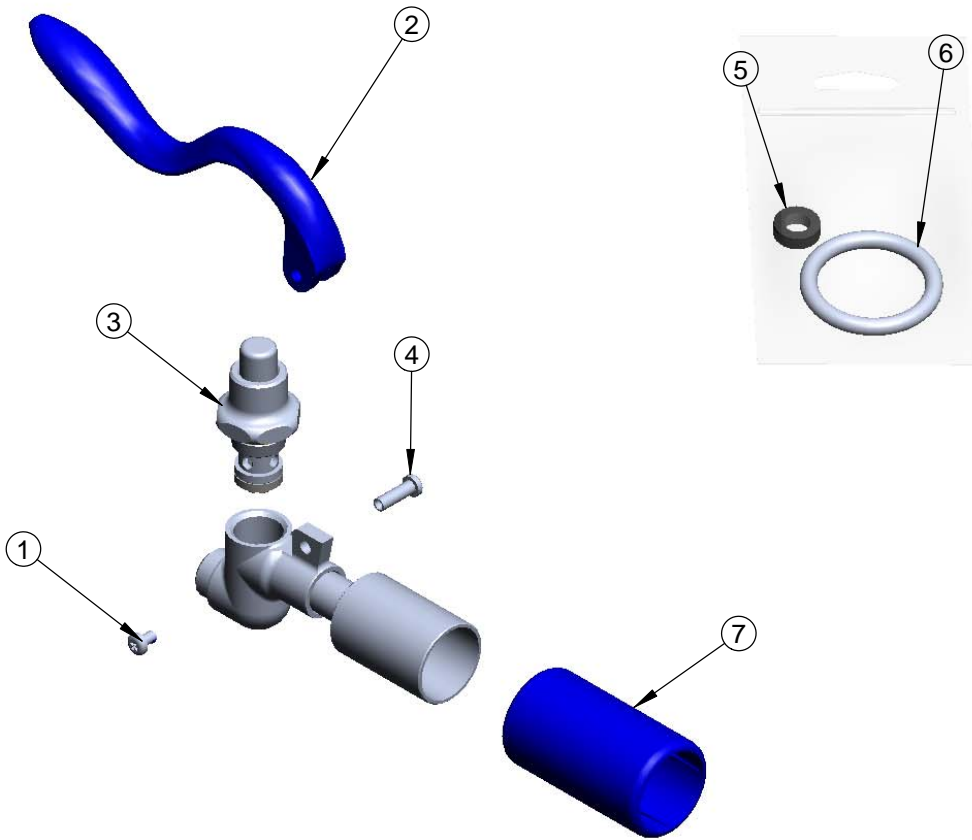
Model No.

EB-0107-C

Item No.

Travelers Rest, SC: 800-476-4103 Simi Valley, CA: 800-423-0150 Fax: 864-834-3518 www.tsbrass.com

| ITEM NO. | SALES NO. | DESCRIPTION |
|----------|-----------|-----------------------------|
| 1 | 003199-45 | Handle Screw, Spray Valve |
| 2 | 001120-45 | Spray Valve Handle |
| 3 | 002856-40 | Bonnet Asm, Spray Valve |
| 4 | 003198-45 | Handle Nut, Spray Valve |
| 5 | 010476-45 | #27 Washer |
| 6 | 000907-45 | Ring, Spray Valve Hold Down |
| 7 | 017710-45 | Shield, Low Flow 0.65GPM |



Product Specifications:

Self-Closing Pre-Rinse Spray Valve w/ 0.65 GPM Spray Nozzle

Drawn
JRM

Checked
DMH

Approved
JHB

Scale:
NTS

Date:
9/01/09

Nozzle #1 Data Recording Sheet

| | | | |
|-------------------------|----------------------|--|--|
| Make | T&S Brass | | |
| Model | B-0107-C & EB-0107-C | | |
| Rated Flow Rate | 0.65 | | |
| Measured %/rated | 1% | | |

| Measured Flowrate | | |
|--------------------------|---------------|---------------|
| | #/H2O | gpm |
| Test #1 | 5.4 | 0.65 |
| Test #2 | 5.385 | 0.65 |
| Test #3 | 5.37 | 0.64 |
| Average | 5.3850 | 0.6459 |

| Measured Cleanability Times (sec) | | |
|--|----------------|----------------|
| TEST 1 | TEST 2 | TEST 3 |
| 20.97 | 19.89 | 21.89 |
| 22.17 | 18.88 | 20.81 |
| 20.08 | 21.83 | 20.91 |
| 19.04 | 19.47 | 24.59 |
| 19.9 | 19.49 | 18.5 |
| 21.19 | 20.4 | 20.46 |
| 22.76 | 20.47 | 21.07 |
| 19.38 | 19.42 | 23.37 |
| 20.83 | 17.77 | 22.13 |
| 22.78 | 18.7 | 20.71 |
| 21.67 | 21.83 | 21.46 |
| 18.28 | 21.67 | 18.18 |
| 18.89 | 22.87 | 20.07 |
| 23.33 | 22.8 | 17.6 |
| 22.05 | 20.12 | 20.02 |
| 18.93 | 22.94 | 18.29 |
| 20.63 | 22.01 | 20.13 |
| 23.54 | 21.19 | 23.06 |
| 19.93 | 20.49 | 20.29 |
| 21.99 | 21.95 | 22.66 |
| Average | Average | Average |
| 20.92 | 20.71 | 20.81 |

Nozzle #2 Data Recording Sheet

| | | | |
|-------------------------|----------------------|--|--|
| Make | T&S Brass | | |
| Model | B-0107-C & EB-0107-C | | |
| Rated Flow Rate | 0.65 | | |
| Measured %/rated | 2% | | |

| Measured Flowrate | | |
|--------------------------|---------------|---------------|
| | #/H2O | gpm |
| Test #1 | 5.335 | 0.64 |
| Test #2 | 5.31 | 0.64 |
| Test #3 | 5.31 | 0.64 |
| Average | 5.3183 | 0.6379 |

| Measured Cleanability Times (sec) | | |
|--|----------------|----------------|
| TEST 1 | TEST 2 | TEST 3 |
| 19.37 | 19.46 | 22.33 |
| 20.64 | 20.93 | 23.14 |
| 19.15 | 22.27 | 19.4 |
| 20.04 | 19.62 | 23.13 |
| 22.13 | 20.03 | 20.87 |
| 20.4 | 21.33 | 21.98 |
| 22.32 | 27.9 | 20.23 |
| 21.33 | 22.35 | 22.93 |
| 22.13 | 22.37 | 21.53 |
| 23.01 | 20.49 | 20.02 |
| 20.04 | 21.67 | 20.37 |
| 20.5 | 22.05 | 22.26 |
| 20.12 | 22.67 | 20.47 |
| 25.55 | 24.73 | 24.24 |
| 21.33 | 21.49 | 22.4 |
| 18.63 | 21.47 | 19.35 |
| 19.3 | 19.49 | 20.88 |
| 21.8 | 23.58 | 22.29 |
| 21.34 | 22.27 | 23.33 |
| 20.37 | 20.93 | 19.29 |
| Average | Average | Average |
| 20.98 | 21.86 | 21.52 |

Nozzle #3 Data Recording Sheet

| | | | |
|-------------------------|----------------------|--|--|
| Make | T&S Brass | | |
| Model | B-0107-C & EB-0107-C | | |
| Rated Flow Rate | 0.65 | | |
| Measured %/rated | 2% | | |

| Measured Flowrate | | |
|-------------------|---------------|---------------|
| | #/H2O | gpm |
| Test #1 | 5.305 | 0.64 |
| Test #2 | 5.32 | 0.64 |
| Test #3 | 5.345 | 0.64 |
| Average | 5.3233 | 0.6385 |

| Measured Cleanability Times (sec) | | |
|-----------------------------------|----------------|----------------|
| TEST 1 | TEST 2 | TEST 3 |
| 19.57 | 20.23 | 20.22 |
| 19.94 | 23.74 | 21.73 |
| 22.13 | 18.58 | 19.84 |
| 19.47 | 19.31 | 21.86 |
| 22.56 | 20.91 | 22.42 |
| 21.39 | 21.97 | 20.67 |
| 20.47 | 21.32 | 19.92 |
| 20.73 | 21.07 | 20.46 |
| 22.42 | 20.83 | 20.95 |
| 24.9 | 21.44 | 23.09 |
| 21.29 | 20.25 | 24.91 |
| 20.99 | 23.64 | 20.15 |
| 21.48 | 23.93 | 22.42 |
| 20.32 | 21.56 | 21.24 |
| 23.07 | 20.11 | 20.51 |
| 20.35 | 23.64 | 21.67 |
| 23.39 | 20 | 21.03 |
| 20.98 | 20.96 | 22.16 |
| 21.21 | 21.88 | 21.06 |
| 21.03 | 23.4 | 20.56 |
| Average | Average | Average |
| 21.38 | 21.44 | 21.34 |